



KIMO CLOTHING

DESIGN CONCEPT PVT. LTD.

We are a design-driven apparel company based in Noida (Uttar Pradesh). Kimo Clothing Design Concept Pvt Ltd is a 20-year-old organization specializing in the design and manufacturing of garments.

www.kimoconcept.com



ABOUT US

BRIEF INTRODUCTION

Work

We create trend-led woven and knitted apparel for women and children dresses, tunics, blouses, tops, kimonos, skirts, shirts, and nightwear at competitive prices and reliable lead times.



Sustainable Innovation

We work with eco-friendly cotton, viscose, and polyester, including EcoVero™, EcoLiva™, BCI cotton, GOTS organic textiles, and recycled polyester (RCS / GRS).

Ethical Manufacturing

Our BSCI-certified facility in Noida, Uttar Pradesh reflects our commitment to ethical production, social responsibility, and consistent quality.

OUR STRENGTHS

BRIEF INTRODUCTION

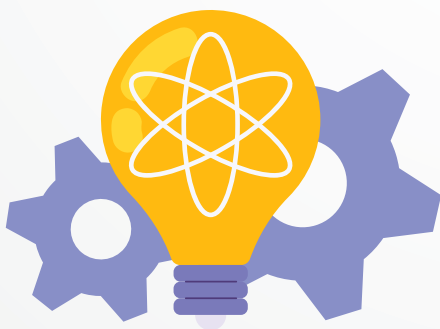


Mission

To create high-quality, trend-driven garments through ethical manufacturing, innovative design, and sustainable practices while building lasting partnerships with global fashion brands.

Vision

To become a globally recognized fashion manufacturing company known for quality, sustainability, innovation, and long-term trust.



Values

We are guided by quality, ethical manufacturing, sustainability, design innovation, and trusted partnerships. These principles shape how we work with global fashion brands and how we grow as a responsible apparel manufacturer.

OUR DEPARTMENTS

OVERVIEW



Designing Department



Merchandising Department



Fabric & Trims Department



Sampling Department



CAD/Pattern Making Department



Embroidery Department



Cutting Department



Stitching Department



Finishing Department



Washing Department



Packing Department



Quality Control and Assurance Department



Export and Accounts Department



HR and Administration Department



Marketing Department

DESIGN DEPARTMENT

We are a design-driven company. Our designers create collections with insights from WGSN.

The team explores each season using WGSN and through in-depth research on fabrics, silhouettes, and colour stories, translating trends into inspiring mood boards and thoughtful concepts.

They work closely with fabric and accessories suppliers to introduce new materials and ideas, sharing fresh design insights with the merchandising team.

Crafted collections are then presented to buyers.



MERCHANDISING

PROCESS FLOW



MANUFACTURING

DEPARTMENT OVERVIEW



We have a team of dedicated and experienced merchandising professionals.

“They manage the complete apparel development process, coordinating between buyers, design, and production.”

Work

The team is responsible for sampling, costing, sourcing, order follow-up, quality standards, and timely delivery, ensuring every garment meets buyer expectations and market requirements



⋮ SAMPLING

DEPARTMENT OVERVIEW



- » Develops high-quality garments for buyer fittings and approvals.
- » Ensures quick sample development with strong coordination and efficiency.
- » Handles proto, fit, and pre-production samples as per buyer requirements.
- » Comprises experienced sampling coordinators, pattern masters, and skilled tailors.
- » Includes a dedicated area for finishing, quality checks, and packaging.



●●●●● SAMPLING

DEPARTMENT OVERVIEW

HAND EMBROIDERY



We create hand-embroidered products crafted by skilled artisans, using traditional techniques such as Kantha, bead work, Sequin work, Chikankari work, chain stitch, hand quilting, and more.

MACHINE EMBROIDERY

We have expert craftsmen who create intricate designs using various stitches, techniques, and materials. Our facility also includes in-house embroidery machines and uses wool, cotton, and silk threads to ensure strong production capacity.



••••• CAD DEPARTMENT

Computerised Pattern Making and Grading (CAD)



The pattern master also estimates the average fabric, trims, and lining consumption per garment.

CAD SOFTWARE— Gerber

Work Flow

- Pattern Making
- Pattern Grading
- Marker Making

Plotter-Gerber

Modern plotters offer several features that distinguish them from standard home and office printers. They are significantly wider than regular printers and include auto-cutting capabilities along with advanced print management tools.

Their wide-format design allows quick, high-resolution printing of large images, supporting sizes up to 300 feet in length and approximately 50 inches in width

PRODUCT RANGE

OVERVIEW

Blouses



Dresses



Skirts



www.kimoconcept.com

Scan QR code
to view our full
product range

PRODUCTION

STITCHING DEPARTMENT



Our Strength

- ✓ 400 sewing machines across 8 sewing lines
- ✓ 700 skilled employees supporting operations



Daily Sewing Capacity

- ✓ Approximately 4,000 garments

WASHING

DEPARTMENT OVERVIEW



Process & Quality

We run controlled wash recipes to stabilise shrinkage, hand-feel, and shade so bulk finishing matches your approved standards and sample sign-off.

Type of Washes

- Normal Garment Wash
- Silicon/softener Wash

LABORATORY

DEPARTMENT OVERVIEW

- ☑ Incoming fabric lots are inspected using the 4-Point Fabric Inspection System.
- ☑ Each fabric lot is tested in the laboratory before approval for production.
- ☑ Typical tests include:
 - ▶ Color fastness
 - ▶ Dimensional stability (shrinkage / expansion)
 - ▶ Fabric slippage
 - ▶ Fabric strength



- ☑ Only after passing these tests is the fabric approved and moved to the final production rack.
- ☑ Trims are also inspected in the laboratory to ensure quality compliance.
- ☑ Size set, inline, midline, and final quality checkpoints are maintained throughout sewing and finishing.
- ☑ Finished garments undergo 100% inspection with random audits before shipment.

●●●● CUTTING

DEPARTMENT OVERVIEW



Daily capacity & equipment

Our cutting department has a daily capacity of approximately 6,000 pieces and is equipped with modern cutting technology, including:

- ☑ Straight knife machines
- ☑ Band knife machines
- ☑ Fusing machines
- ☑ High-precision cutting machines

Built for speed and accuracy

This infrastructure enables efficient and accurate cutting for both small orders and large production volumes.

FINISHING

DEPARTMENT OVERVIEW

The Finishing Department ensures every garment is carefully inspected, ironed, measured, folded, tagged, and packed before dispatch.



Our team follows strict quality control processes to maintain high standards and deliver garments that meet customer and international quality requirements.

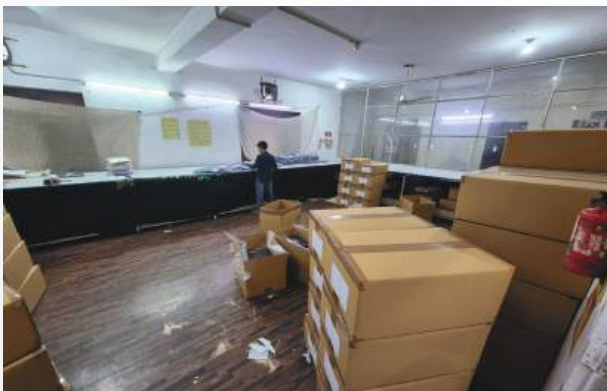
PACKAGING

DEPARTMENT OVERVIEW

The Packaging Department is responsible for the final preparation of garments before shipment.



Products are carefully folded, labeled, packed, and organized to ensure proper handling, quality consistency, and timely delivery as per buyer specifications.



We support buyer-specific packing instructions, carton labels, and pre-dispatch verification to reduce handling damage and simplify inbound receiving at your end.

OUR CLIENTS

OVERVIEW

CAMAÏEU

promod

DOWNEAST

JR
Jacqueline Riu

GOSSIA

ouï

THE STING

ARMAND
THIERY

Maison 123
PARIS

Christine
LAURE

ellos

LOVE &
DIVINE

TRIBAL®


LIVERPOOL
let the change

CERTIFICATIONS



CU Inspections & Certifications India Pvt. Ltd.
22nd & 23rd Floor, B wing, Arihant Aura, plot 13/1, TTC Industrial Area, Turbhe MIDC, Opposite Turbhe Station, 400705,
Navi Mumbai, Maharashtra, IN-MH, India, IN
Phone: +91 22 61294200
www.petersoncontrolunion.com

SCOPE CERTIFICATE

Scope Certificate Number: CU1470128GOTS-2025-00132618

Control Union Certifications certifies that

Kimo Clothing Design Concept Pvt Ltd

License Number: CB-GOTS-CUC-03-1470128

B-6, Sector-63, Gautam Buddha Nagar
Uttar Pradesh, Uttar Pradesh, IN-UP, India, IN

has been audited and found to be in conformity with the
GLOBAL ORGANIC TEXTILE STANDARD(GOTS)
- Version 7.0 -

Product categories mentioned below (and further specified in the product appendix) conform with the standard(s):

Product categories: Children's apparel (PC0004), Women's apparel (PC0002), Greige fabrics (PC0026), Men's apparel (PC0001), Dyed fabrics (PC0025)

Process categories carried out under responsibility of the above mentioned company for the certified products cover:

Manufacturing (PR0016), Packing (PR0020), Washing, laundering (PR0032)

*The processes marked with an asterisk may be carried out by subcontractors.

This certificate is valid until:
2026-08-26

CERTIFICATIONS



CU Inspections & Certifications India Pvt. Ltd.
22nd & 23rd Floor, B wing, Arihant Aura, plot 13/1, TTC Industrial Area, Turbhe MIDC, Opposite Turbhe Station, 400705,
Navi Mumbai, Maharashtra, IN-MH, India, IN
Phone: +91 22 61294200
www.petersoncontrolunion.com

SCOPE CERTIFICATE

Scope Certificate Number: CU1470128GRS-2025-00093493
Scope Certificate Version Number: CU1470128GRS-2025-00132617

Control Union Certifications certifies that
Kimo Clothing Design Concept Pvt Ltd

Textile Exchange-ID (TE-ID): TE-00033841

License Number: CB-CUI-1470128

B-6, Sector-63, Gautam Buddha Nagar
Uttar Pradesh, Uttar Pradesh, IN-UP, India, IN

has been audited and found to be in conformity with the
GLOBAL RECYCLED STANDARD (GRS)
- Version 4.0 -

Product categories mentioned below (and further specified in the product appendix) conform with the standard(s):

Product categories: Women's apparel (PC0002), Children's apparel (PC0004), Men's apparel (PC0001)

Process categories carried out under responsibility of the above-mentioned company for the certified products cover:

Manufacturing (PR0016), Packing (PR0020), Washing, laundering (PR0032)

*The processes marked with an asterisk may be carried out by subcontractors.

This certificate is valid until:
2026-08-26

Audit criteria:

Global Recycled Standard V4.0; Content Claim Standard V3.1; Textile Exchange Standards Claims Policy V1.3

CERTIFICATIONS

amfori @ BSCI
Trade with purpose



BCI Better Cotton Initiative



MANAGEMENT TEAM

LEADERSHIP & OVERSIGHT

Our management team brings together production, quality, merchandising, and compliance under clear ownership—so timelines, standards, and communication stay aligned from first tech pack through shipment.



Mr. Rajeev Sharma
Managing Director



Ms. Tejal Sharma
Managing Director






Mrs. Kumud Sharma
Director



Mr. Gyan Singh
General Manager

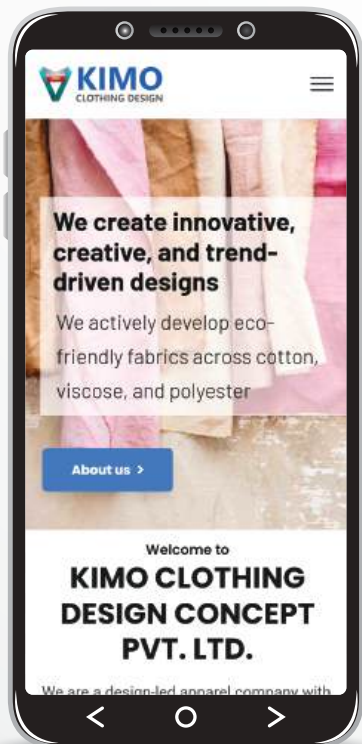
OUR CONTACTS

Office & Factory



-  B-06 Sector 63, Noida,
Uttar Pradesh - 201301
-  +91-120-4022400 (Ext. 400-444)
-  www.kimoconcept.com





Scan QR code
to view our full
product range





Managing Director

-  rajeev@kimoconcept.com
-  +91 9135293511



Managing Director

-  tejal@kimoconcept.com
-  +91 9135293511

Director

-  kumud@kimoconcept.com
-  +91 9135293511

General Manager

-  gyan@kimoconcept.com
-  +91 9958762211